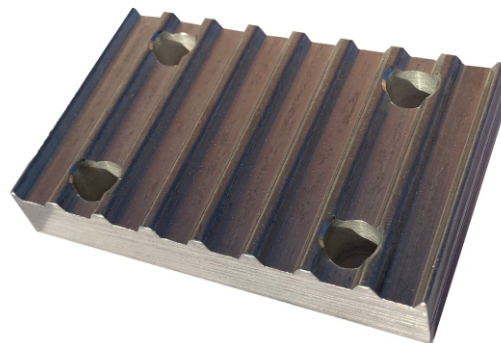




POWER TRANSMISSION PARTS

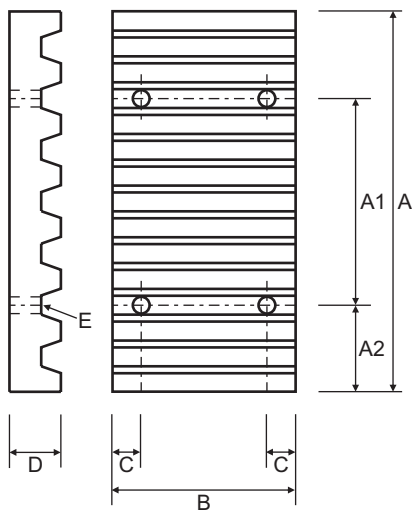
*Spare parts in-stock when you need them*

## Timing Belt Clamping Plates



[www.ptparts.com.au](http://www.ptparts.com.au)

# Timing Belt Clamping Plates



Ideal for applications where the belt must be firmly held in one spot. Perfect for use with long length belting. Naismith Engineering keep a large range of Clamp Plates on the shelf.

Classical	Part No	A	A1	A2	B	C	D	E
XL	PIA-XL025	42.5	25.4	8.6	25.4	6.0	8.0	5.5
	PIA-XL037	42.5	25.4	8.6	28.5	6.0	8.0	5.5
L	PIA-L050	76.6	47.6	14.5	39.1	8.0	15.0	9.0
	PIA-L075	76.6	47.6	14.5	45.0	8.0	15.0	9.0
	PIA-L100	76.6	47.6	14.5	51.5	8.0	15.0	9.0
H	PIA-H050	106.9	63.5	21.7	45.0	10.0	22.0	11.0
	PIA-H075	106.9	63.5	21.7	51.0	10.0	22.0	11.0
	PIA-H100	106.9	63.5	21.7	57.4	10.0	22.0	11.0

HTD	Part No	A	A1	A2	B	C	D	E
5M	PIA-5M09	41.8	25.0	8.4	28.0	6.0	8.0	5.5
	PIA-5M15	41.8	25.0	8.4	34.0	6.0	8.0	5.5
	PIA-5M25	41.8	25.0	8.4	44.0	6.0	8.0	5.5
8M	PIA-8M20	66.0	40.0	13.0	45.0	8.0	15.0	9.0
	PIA-8M30	66.0	40.0	13.0	55.0	8.0	15.0	9.0
	PIA-8M50	66.0	40.0	13.0	75.0	8.0	15.0	9.0
	PIA-8M85	66.0	40.0	13.0	110.0	8.0	15.0	9.0
14M	PIA-14M40	116.0	70.0	23.0	71.0	10.0	22.0	11.0
	PIA-14M55	116.0	70.0	23.0	86.0	10.0	22.0	11.0
	PIA-14M85	116.0	70.0	23.0	116.0	10.0	22.0	11.0
	PIA-14M115	116.0	70.0	23.0	146.0	10.0	22.0	11.0
	PIA-14M170	116.0	70.0	23.0	201.0	10.0	22.0	11.0

Metric	Part No	A	A1	A2	B	C	D	E
T5	PIA-T5/10	41.8	25.0	8.4	29.0	6.0	8.0	5.5
	PIA-T5/16	41.8	25.0	8.4	35.0	6.0	8.0	5.5
	PIA-T5/25	41.8	25.0	8.4	44.0	6.0	8.0	5.5
T10	PIA-T10/16	80.0	50.0	15.0	41.0	8.0	15.0	9.0
	PIA-T10/25	80.0	50.0	15.0	50.0	8.0	15.0	9.0
	PIA-T10/32	80.0	50.0	15.0	57.0	8.0	15.0	9.0
	PIA-T10/50	80.0	50.0	15.0	75.0	8.0	15.0	9.0
AT5	PIA-AT5/10	41.8	25.0	8.4	29.0	6.0	8.0	5.5
	PIA-AT5/16	41.8	25.0	8.4	35.0	6.0	8.0	5.5
	PIA-AT5/25	41.8	25.0	8.4	44.0	6.0	8.0	5.5
AT10	PIA-AT10/16	80.0	50.0	15.0	41.0	8.0	15.0	9.0
	PIA-AT10/25	80.0	50.0	15.0	50.0	8.0	15.0	9.0
	PIA-AT10/32	80.0	50.0	15.0	57.0	8.0	15.0	9.0
	PIA-AT10/50	80.0	50.0	15.0	75.0	8.0	15.0	9.0